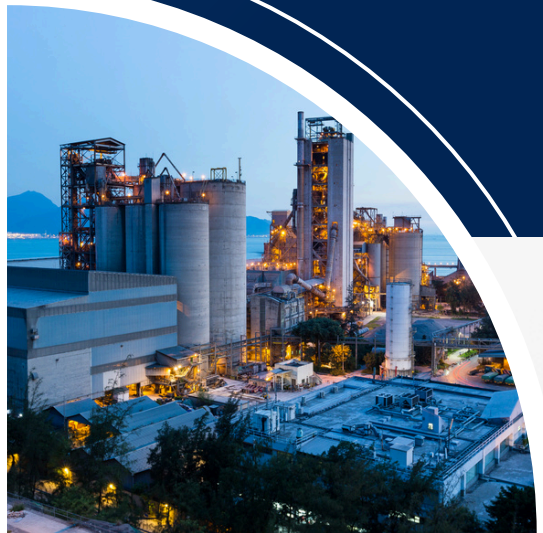


Case Study on _____

Factory Automation System

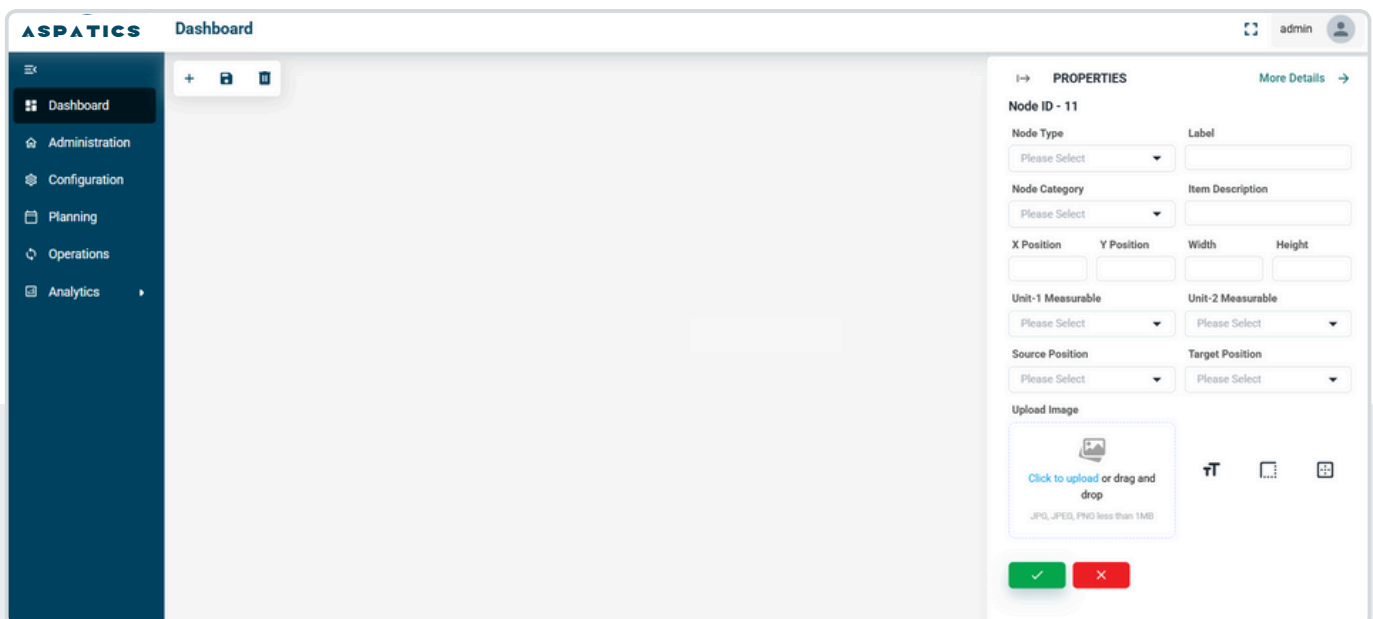


Project Overview

This project is a comprehensive solution designed to **streamline production management** and **visualization** in **manufacturing systems**. It focuses on **mapping** the journey of **raw materials** as they are processed by **machines**, resulting in **finished products** and **waste materials**.

The project features a **graph-like visualization** to illustrate **material flow**, machine interactions, and outputs, providing insights into **production efficiency**. Additionally, it integrates an employee attendance system to monitor **workforce participation** and **productivity**.

It also includes **Gantt charts** to effectively **plan, schedule, and track production timelines**, ensuring **optimized resource allocation** and **project execution**. Together, these features aim to enhance **operational transparency** and **efficiency** in **production environments**.



The screenshot displays the ASPATICS Dashboard interface. On the left, a dark blue sidebar contains a menu with the following items: Dashboard (selected), Administration, Configuration, Planning, Operations, and Analytics. The main content area is titled 'Dashboard' and features a large, empty light blue space. On the right side, a 'PROPERTIES' panel is open for 'Node ID - 11'. This panel includes several form fields: 'Node Type' and 'Node Category' (both dropdown menus with 'Please Select' as the current selection), 'Label' (text input), 'Item Description' (text input), 'X Position', 'Y Position', 'Width', and 'Height' (numeric input fields), 'Unit-1 Measurable' and 'Unit-2 Measurable' (dropdown menus with 'Please Select'), 'Source Position' and 'Target Position' (dropdown menus with 'Please Select'), and an 'Upload Image' section with a file upload icon and text 'Click to upload or drag and drop' and 'JPG, JPEG, PNG less than 1MB'. At the bottom of the properties panel are green and red confirmation buttons.

Project Feature View

1. Dashboard

- **Properties Form:** Centralized hub to manage and input essential production properties and settings for seamless operations.

2. Administration

- **Shift Management:** Define and manage work shifts for employees to optimize production schedules.
- **Employee Management:** Maintain a database of employees, track roles, and manage individual profiles.
- **Department Management:** Organize and oversee different departments involved in the production process.

3. Configuration

- **Route Configuration:** Define production routes and material flows to streamline the manufacturing process.
- **Staff Configuration:** Assign roles, manage teams, and ensure workforce alignment with production goals.
- **Material Configuration:** Maintain details about raw materials, intermediate products, and finished goods.
- **Device Configuration:** Integrate and manage machines/devices involved in the production process for efficiency improvements.

4. Planning

- **Attendance Tracking:** Monitor employee attendance for better workforce planning.
- **Staff Allocation:** Assign employees to specific machines, tasks, or production stages.
- **Job Assignment:** Allocate and schedule jobs effectively to meet production timelines.

5. Operations

- **Jobs:** Oversee production jobs in one place.

6. Analytics

- **Job Status:** Visualize and track the progress of individual jobs within the production cycle.
- **Machine-wise Report:** Analyze machine performance and usage for efficiency improvements.
- **Material Data Report:** Access detailed insights on material usage, waste, and inventory levels.
- **Material Production Report:** Evaluate production output and material transformation rates.
- **Gantt Chart:** Plan and visualize production timelines, dependencies, and schedules for better project management.

Client Details

»» Name: **Confidential**

»» Location: **India**

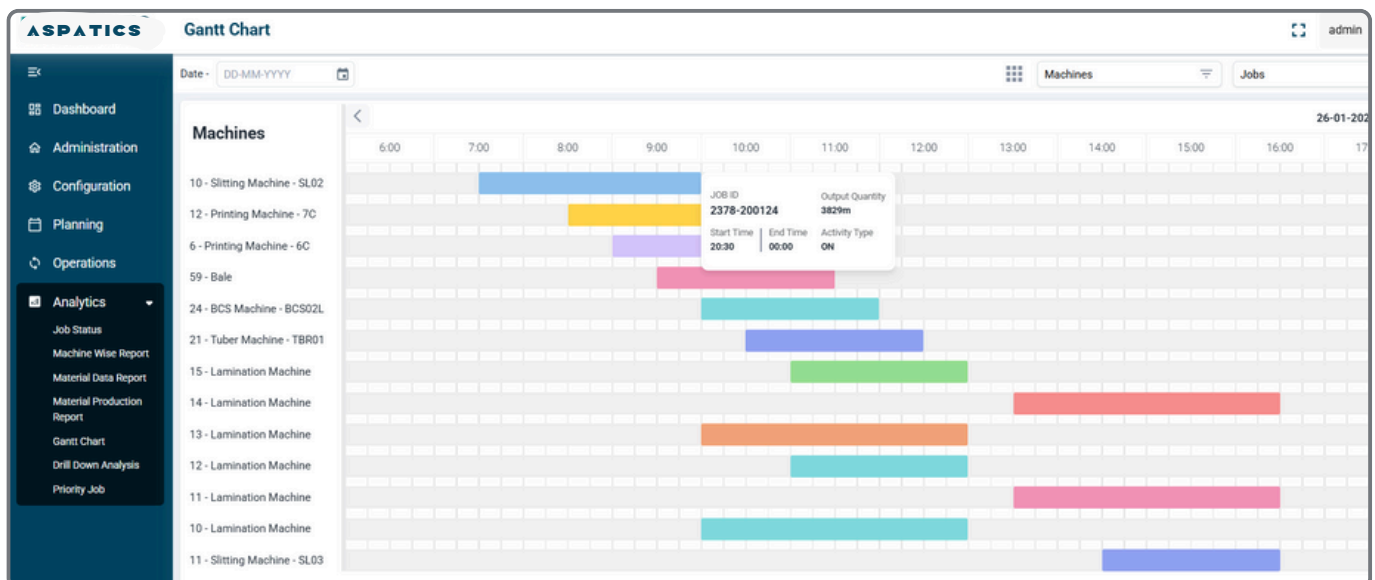
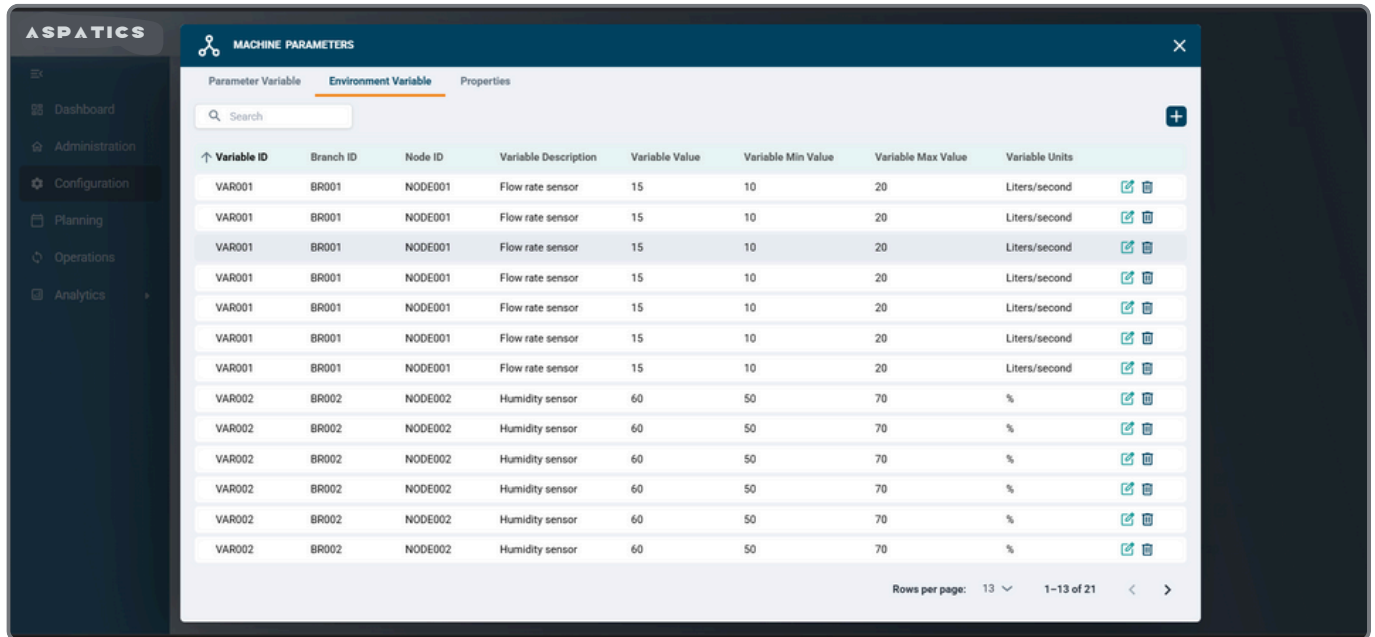
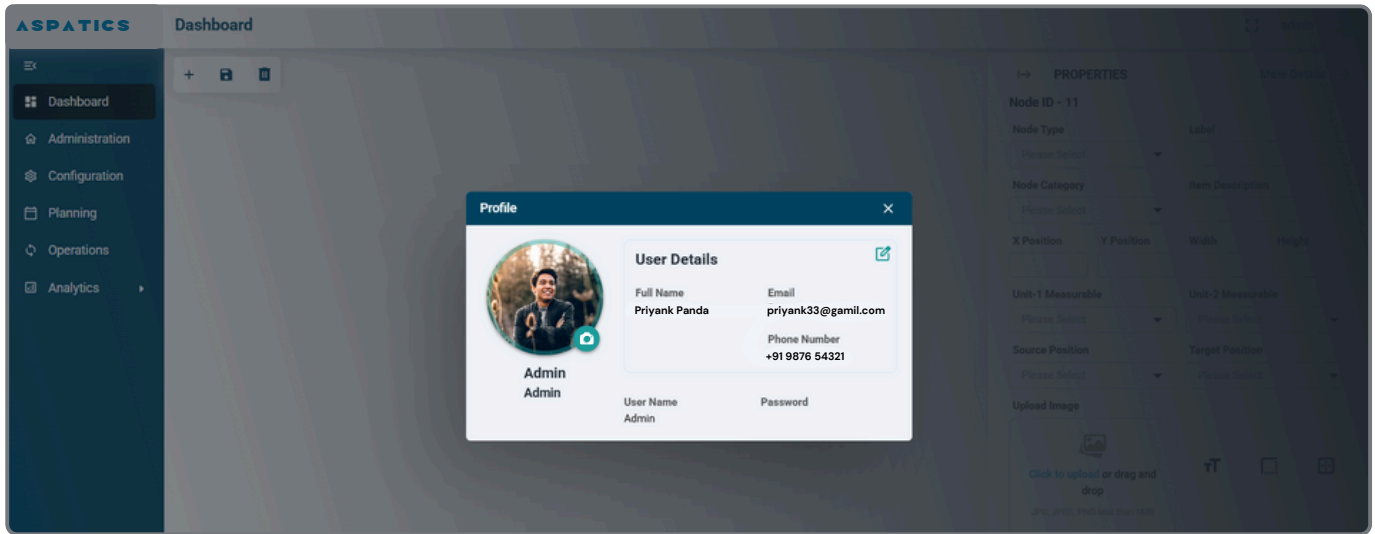
»» Industry: **Manufacturing**

Technology Details

»» **React.js**

»» **Material UI**

Screenshots



Thank You

Contact Us



<https://bit.ly/utkallabs-skype>



contact@utkallabs.com



www.utkallabs.com

Follow us

